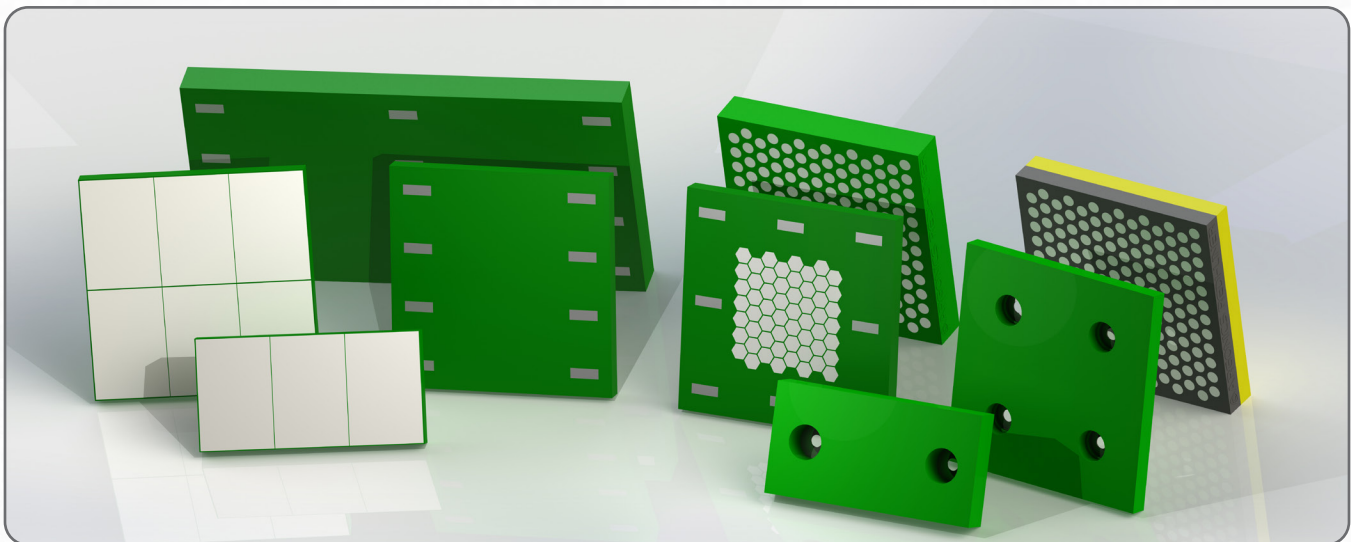


Wear Plates

MODULAR LINING SYSTEM



Our wear plates can be arranged into any wear pattern that is needed. Their unique, simple installation methods allow you to replace only what's needed, instead of replacing the entire liner set. They are available in many sizes, with and without ceramic, and in a variety of installation methods, including magnetic.



PERFECT FOR THESE APPLICATIONS:

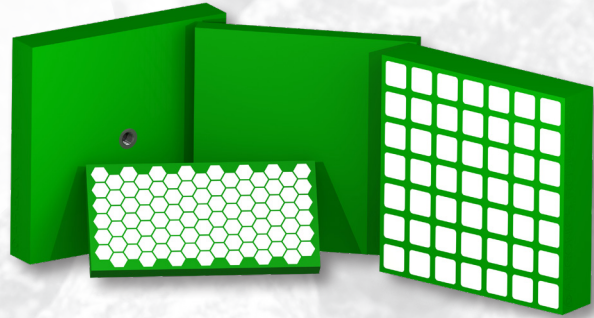
- Conveyor transfer points
- Screen feed liners
- Chutes with high wear
- Charge chutes
- Screen discharge liners

WEAR PLATE PRODUCTS:

- Redi-Liner with and without ceramic
- Dual durometer Redi-Liner with ceramic
- Modular wear plates
- Magnetic wear plates
- Ceramic tile magnetic wear plates
- Magnetic ceramic patch

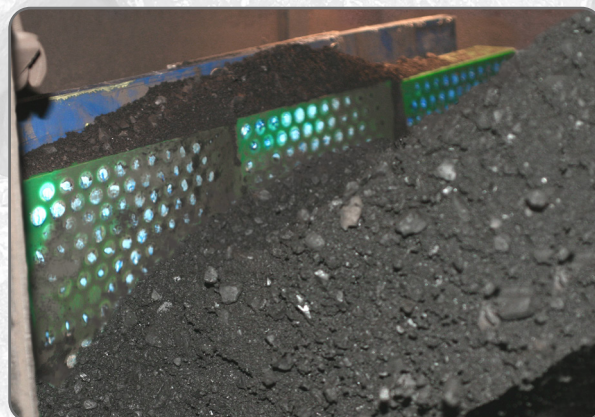
Redi-Liner Bolt-in Wear Plates

- Bolt-in 6"x12" and 12"x12" panels can be arranged into any wear pattern that is needed
- Single-bolt install method for easy installation
- Unique, simple installation method allows you to replace only what's needed, instead of replacing the entire liner
- Requires no maintenance, will outlast most any other wear product available today
- Provides protection for your toughest hot spots in loading areas, bin hoppers and drop zones
- Available in solid polyurethane or with ceramics



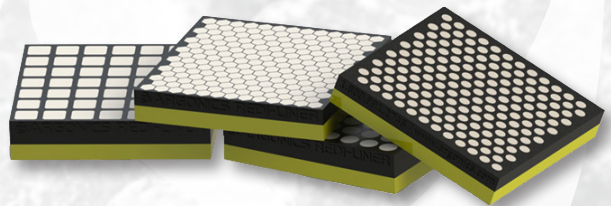
Redi-Liner Sizes:

Size	6"x12", 12"x12"	6"x12", 12"x12"	6"x12", 12"x12"	6"x12", 12"x12"
Thickness	1"	1½"	2"	2½"
Ceramic options	¼" hextiles	½" hextiles	½" hextiles or ⅜" cylinders	¼" cylinders or ½" cubes



Redi-Liner Dual Durometer Ceramic Wear Plates

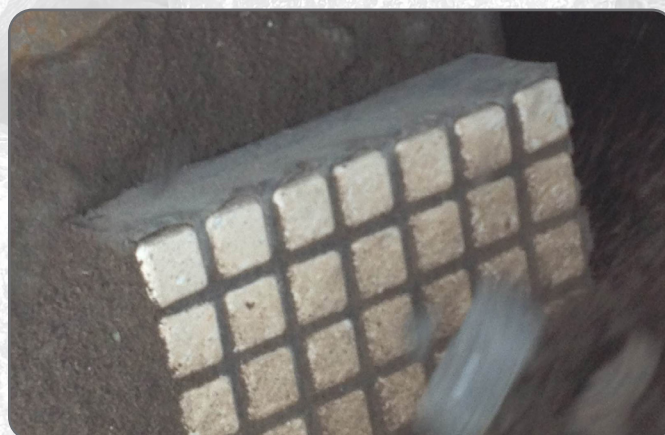
The Dual Durometer Ceramic Redi-Liner bolt-in 12"x12" wear plates can be arranged into any wear pattern that is needed. Available in a 93/69 durometer combination, the plates fuse the abrasion-resistant qualities of ceramic and harder urethane with the impact absorption of the softer urethane in the back.



- The top, outer facing layer is ceramics embedded in a hard durometer, which is very abrasion-resistant
- Bottom layer, which faces the mounting structure, is a softer, impact-absorbing durometer
- Single-bolt installation method
- The dual durometer ceramic wear plates exhibited 18% less rebound when compared to our single durometer ceramic plates

Redi-Liner Dual Duro Ceramic Sizes:

Size	12"x12"	12"x12"	12"x12"
Thickness	2"	2 1/2"	4"
Ceramics	1/2" hextiles or 13/16" cylinders	1 1/4" cylinders or 1 1/2" cubes	1 1/2" cubes

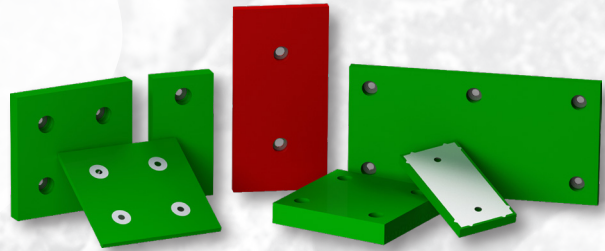


Modular Wear Plates

Modular Wear Plates

Modular wear plates help eliminate material adhesion and dampen noise levels significantly. These polyurethane wear plates have been proven to be cost-effective over steel liners by as much as 5-to-1.

- Panels can be placed together to easily address wear areas of any size
- Kryptane® polyurethane outlasts rubber and steel AR plate
- High level of abrasion resistance
- Low coefficient of friction
- High-performance urethane extends plate life
- Available in a variety of standard sizes, as well as weldable and boltable options
- Custom sizes available



Modular Wear Plates Sizes:

Size	6"x12", 9"x18", 12"x12", 12"x24"
Thickness	1/2", 1", 1 1/2", 2", 2 1/2"



Magnetic Wear Plates

Our magnetic modular wear plates can be quickly and easily installed into any pattern to help reduce wear in critical areas of your operation.

- Strong rare earth magnets hold the wear plates in place. No welding, gluing or bolting necessary!
- Wear plates can be placed together to easily address wear areas of any size
- Kryptane® polyurethane outlasts rubber and steel AR plate
- Available in a wide variety of formulations
- Custom sizes available



Magnetic Panels Sizes:

Size	6"x6", 6"x12", 12"x12", 12"x24", 18"x18"
Thickness	1", 1½", 2", 2½"



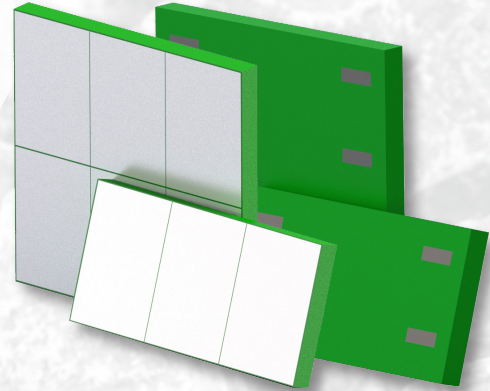
Magnetic Panels

Ceramic Tile Magnetic Wear Plates

Ceramic tile magnetic wear plates are the newest addition to our modular lining product offerings. 4"x6" ceramic tiles offer a nearly uninterrupted ceramic surface, providing extreme wear protection.

Strong magnets hold the wear plates firmly in place, even on vibrating applications. Our 1" thick plates come in 6"x12" and 12"x12" sizes, allowing you to custom fit to your specific wear pattern needs.

- Strong rare earth magnets hold the wear plates in place. No welding, gluing or bolting necessary!
- Ceramic tiles provide nearly uninterrupted surface for extreme wear protection



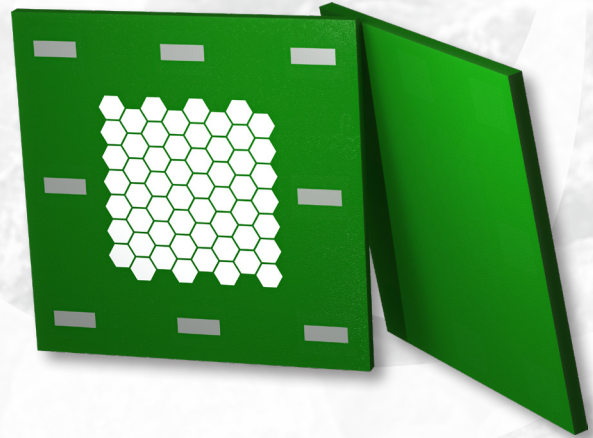
Ceramic Tile Magnetic Wear Plate Sizes:

Size	6"x12", 12"x12"
Thickness	1"
Ceramics	1/2"x4"x6" ceramic tiles



Magnetic Ceramic Patches

- Strong rare earth magnets hold the patches in place. No welding, gluing or bolting necessary!
- Our 1/2" thick patches are perfect for covering holes in contoured walls or chutes
- The hextile ceramics face toward the worn spot to offer extra protection
- Patch is intended to provide a temporary fix until repairs can be scheduled
- Stays firmly in place even on vibrating applications



Magnetic Ceramic Patch Sizes:

Size	12"x12"	12"x12"
Thickness	1/2"	1"
Ceramics	1/4" hextiles	1/2" hextiles



LINER THICKNESS AND CERAMICS GUIDE

Liner Overall Thickness	Ceramic Type	Max. Nominal Aggregate Size (in.)	Max. Impact Distance* (ft.)
0.5"	Solid urethane	1"	4'
1"	Solid urethane	2"	6'
1.5"	Solid urethane	3"	8'
2"	Solid urethane	4"	10'
1"	KX 1/4" hextile	1"	1'
1"-2"	KT 1/2" hextile or tile	2"	2'
2"	KC 13/16" cylinders	4"	6'
2.5"	KS 1.25" cylinders	6"	8'
2.5"	KH 1.5"x1.5"x1.5" cubes	8"	10'
4"	KH 1.5"x1.5"x1.5" cubes (dual duro)	12"	14'

This chart is not comprehensive. Following the above guidelines allows for optimal life of the liner. Wear life is also impacted by the angle of impact. For more information tailored to your specific application, contact Argonics.

*Max. impact distance assumes material falling 90° off of conveyor

Formula/Durometer Color	Application	Material	Temperature
ETHER 80 (R80)	Used for fine particle abrasion, especially wet applications	Fine particles including sand, grain, 3/8" minus washed materials	-40°F to 225°F
ESTER 83 (G83)	Our standard, high abrasion-resistant all-purpose formulation	Dry sand and gravel materials, coal, ores	-40°F to 225°F
ETHER 90 (R90)	The lowest coefficient of friction formulation	1-1/2" washed/finished product. Wood chips, cement, limestone, grain, sugar, clay or other sticky material	-20°F to 225°F
ESTER 93 (B93)	Our high temperature formulation with high cut/tear properties	Extremely coarse aggregate, asphalt, recycled materials, glass, higher temp, sticky applications	-20°F to 250°F Up to 300°F intermittent



ARGONICS
ENGINEERED POLYURETHANE

520 9th Street • Gwinn, MI 49841
906.226.9747 f: 906.226.9779
www.argonics.com

